

2025



Model airplanes

ELAPOR
FOAM

HITEC

POWER
PEAK®

MULTI
FLIGHT

ROXXY®

MULTIPLEX®

ZACKI2

M-LINK ()))

INDOOR
PRIME TIME



Throwing glider

- Loopi

Page 3



Beginner models

- FunnyStar • Pacer • EasyStar 3 • EasyGlider

Page 4-7



Electric glider models

- Heron • FunRay • LENTUS THERMIK

Page 8-10



Wing-only models

- FUNWING

Page 11



Motor models

- FunCub • TwinStar • Partenavia • TOMMY jr. • Learjet • FunCub XL ND
- Parkmaster PRO • AcroMaster PRO • Extra 300S • Extra 330LX

Page 12-21



Racing models

- RACEWULF • FunJet 2 • FunJet ULTRA 2

Page 22-24



Indoor models

- FunnyCub • Challenger • Slick X360 • Slick 360 4D • J-10 • Eurofighter

Page 25-30



MULTIPLEX® EXCLUSIV

- GP14 VELO CARBOTEC

Page 31

accessories

Page 32

Piktogramme

Kit

Kit



Impact-resistant special foam material

Kit plus

Construction kit + drive + servos (incl. servo extension)+ (partly with battery)

RR

Model assembled incl. drive + servos (incl. servo extension) + decal sheet in the box

RR+

Model assembled incl. drive + servos (incl. servo extension) + receiver + battery + decal sheet in the box

RTF

Model assembled incl. drive + servos (incl. servo extension) + receiver + battery + decal sheet in the box + remote control system + charger

RTF M1+3



Mode 1+3

RTF M2+4



Mode 2+4



Wingspan



Fuselage length



Flying weight glider



Flying weight electric



Level 1 Beginner



Level 2 Hobby



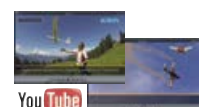
Level 3 Advanced



Level 4 Expert



Great MULTIPLEX videos be sure to watch!



YouTube MULTIPLEX TV
http://www.youtube.com/multiplexmodellsport

f
https://www.facebook.com/multiplexmodellsport

Instagram
https://www.instagram.com/multiplexmodellsport



Loopi

Kit

1



485 mm



470 mm

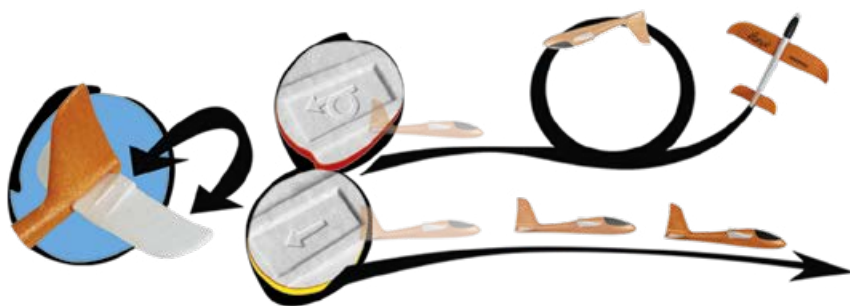


ca. 40 g

Practice makes perfect...

The Loopi will delight you with fast loops or long gliding flights, just as you wish. Simply „reposition“ the tailplane and you can choose between looping or gliding. The Loopi is made of crash-resistant particle foam - virtually „indestructible“! Have fun!

Further information on LOOPI
can be found at www.multiplex-rc.de



To the Loopi





FUNNYSTAR

FUNNYSTAR - Free to start!

Our new FUNNYSTAR is the perfect introduction to the world of model flying. It is suitable for both outdoor and indoor use (gymnasiums and sports halls). Thanks to the use of crash-resistant material (EPP), the FUNNYSTAR can take a beating. This is appreciated by beginners and high-spirited professionals alike.

The construction of the model is kept as simple as possible and can therefore also be easily mastered by beginners.

- almost indestructible
- less than 250 g take-off weight

The flying characteristics are very uncomplicated, the model flies harmoniously and follows the control commands directly. A special feature of the FUNNYSTAR is its wing, which can be removed without tools for easy transport and space-saving storage.

The model is a joy to fly for beginners and professionals alike.

Kit

Kitplus



RC functions: Rudder, elevator, motor



850 mm

795 mm

ca. 175 g

2S~450 mAh

Further information on the FUNNYSTAR can be found at www.multiplex-rc.de

INDOOR PRIME TIME

Due to its low flying weight, its manoeuvrability and its material, the FUNNYSTAR is also ideal for indoor use suitable!



To the FunnyStar



PACER

Ideal beginner's model for powered flight.

The new MULTIPLEX PACER is an entry-level model model modelled on the Piper PA 20 Pacer. The original is a 4-seater light aircraft that was built in the 1950s in the United States. It had a wingspan of approx. 9 metres and was built with a tubular steel fuselage with fabric-covered aluminium wings. The engines had an output of between 125 and 180 hp.

Our PACER is made of ELAPOR®, a robust lightweight foam. Assembly takes just a few minutes, without the use of glue. The spar of the wing is a foamed-in fibreglass tube, which offers high strength and low weight.

The engine mount and the undercarriage and wing mounts in the fuselage are injection-moulded from robust plastic and glued in place. The undercarriage consists of a white-painted aluminium frame with two large sponge rubber wheels (bush wheels).

Reliable electronic components are also pre-installed in the PACER. These include four digital servos, which are responsible for the controls, the powerful brushless motor and the corresponding 20A controller. The components have been optimally adapted to the model.

With the recommended battery, the drive has a long runtime, giving you plenty of flying fun.

The PACER has absolutely uncritical flight characteristics that will not overwhelm even a beginner. It is also a lot of fun for advanced pilots and is the perfect

model to fly after work. Thanks to the robust undercarriage and soft wheels, take-offs and landings are possible on almost any surface. It is therefore also ideal for training young pilots. In addition to its super flight characteristics, it also has a great appearance, especially in the air.

Further information, accessories and spare parts for the PACER can be found at www.multiplex-rc.de

RR ELAPOR FOAM 2

RC functions: Rudder, elevator, motor

1.150 mm 870 mm ca. 900 g 3S~2200 mAh



To the PACER





EASYSTAR 3

EASYSTAR 3 - Flying can be this easy!

The EasyStar is the ideal model for beginners - quick to build and easy to master. With this 'Star', which has received several awards from experts, you can learn to fly wonderfully. It has excellent gliding characteristics and stays in the air for a long time. With the recommended 3s 2200mAh ROXXY battery, up to 40 minutes flight time can be achieved without thermals. Thanks to the rear-mounted, protected motor, it can also withstand rough landings. At the same time, it attracts attention with its striking design.

The long success story of the Easystar, which even today's professionals started out with, speaks for itself.

We have continued to develop and improve it to this day.

We have equipped the current version of the Easystar with robust metal geared servos for all control functions. At the same time, we have equipped the new Easystar 3 with functional ailerons ex works. This means that beginners can learn to control all axes right from the start. The advanced pilot will be delighted with the added agility.

Take off with the Easy Star 3.

KIT

RR

RTF
M1+3RTF
M2+4ELAPOR
FOAM

RC functions: Rudder, elevator, aileron, motor



1.370 mm

870 mm

ca.680 g

3S~2200 mAh

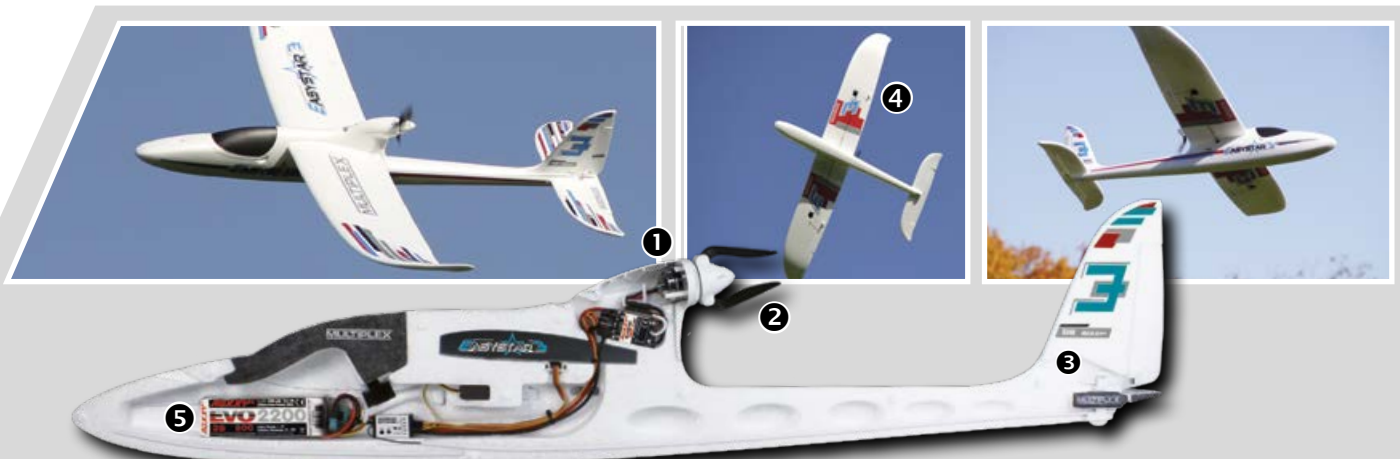
Features:

- ❶ Powerful brushless motor
- ❷ Folding propeller for less drag in gliding flight
- ❸ Easily removable tailplane for easy transport
- ❹ Ailerons (servos built in from RR version)
- ❺ Large cargo hold - space for large LiPo

Further information, accessories and spare parts for the EasyStar 3 can be found at
www.multiplex-rc.de



Zum EasyStar 3





EASYGLIDER 4

The best EasyGlider ever!

The good-natured and robust electric glider EasyGlider 4 with ailerons in the 4th generation. Its particular strength is its ability to easily utilise thermals and updrafts with a low basic speed in gliding flight.

The EasyGlider 4 is a fun model that also cuts a fine figure in aerobatics (loops, rolls, inverted flight, turns, ...).

According to the motto: 'Evolution instead of revolution', this ELAPOR® classic has been revised and is being launched on the market as a 100% 'Made in Germany' model. The MULTIPLEX EasyGlider is cult and unrivalled in its field. That's why the EasyGlider 4 had to remain a genuine MULTIPLEX EasyGlider.

Further information, accessories and spare parts for the EasyGlider 4 can be found at www.multiplex-rc.de

Kit RR RR+ RTF M1+3 RTF M2+4

RC functions: Rudder, elevator, aileron, motor



1.800 mm 1.080 mm ca.1.100 g 3S~2200 mAh

ELAPOR
FOAM

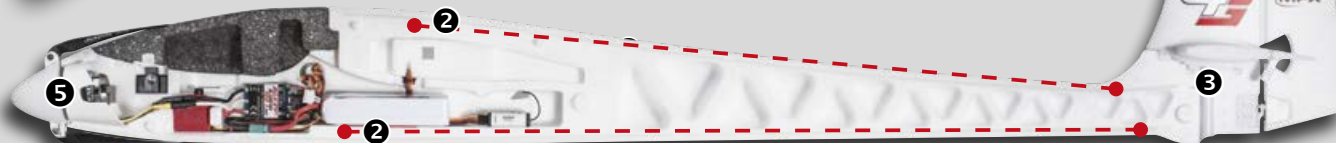


Features:

- 1 Wings with super-light and high-strength GRP square spar
- 2 Stiff fuselage thanks to M-Space technology
- 3 Removable stabiliser and tailplane - easy transport
- 4 Modern designed decal sheet with landing skid
- 5 Efficient and lightweight ROXXY drive



To the EasyGlider 4





In the style of the house!

The MULTIPLEX HERON is a high-performance electric glider with a T-tail and high-performance 4-flap wing. Thanks to its uncritical flight behaviour and excellent flight performance, the ELAPOR® model lets you experience maximum flying pleasure. Regardless of whether you are a hobby pilot or an old hand. With the standard flaps, you can land with absolute precision, improve the take-off characteristics and benefit from its wide performance spectrum for speed flight, aerobatics and thermal flight. The ELAPOR® model is characterised by a multitude of new, innovative and extravagant detailed solutions, setting completely new standards in its class.

Further information, accessories and spare parts for the HERON can be found at www.multiplex-rc.de



RR



RC functions: Rudder, elevator, aileron, motor



2.400 mm 1.100 mm ca.1.300 g ca.1.500 g 3S~2600 mAh

Features:

- ❶ 4-flap wings for high flight performance (flaps) and precise landing approaches (butterfly)
- ❷ Innovative CFRP / ALU tubular spar technology for heavy-duty wings
- ❸ High-strength fuselage thanks to GRP 'M-SPACE technology'
- ❹ High-performance brushless drive with folding propeller for RR version
- ❺ Transparent canopy with highly detailed cockpit
- ❻ Easy to transport thanks to removable wings and tailplane

Extreme torsional and bending strength thanks to carbon fibre/aluminium tubular spar technology



To the HERON





FUNRAY

The MULTIPLEX FUNRAY marked the beginning of a new era.

Kit

RR

ELAPOR
FOAM



RC functions: Rudder, elevator, aileron, motor



2.000 mm 1.230 mm ca.1.790 g 3S~3200 mAh

This elegant 4-flap electric glider inspires dynamic glider aerobatics. The FUNRAY has excellent all-round characteristics and is equally at home on slopes and in thermals. After a steep descent with butterfly, landing with pinpoint accuracy is child's play. The FUNRAY impresses with incredible speed and precision in aerobatic manoeuvres.

Features:

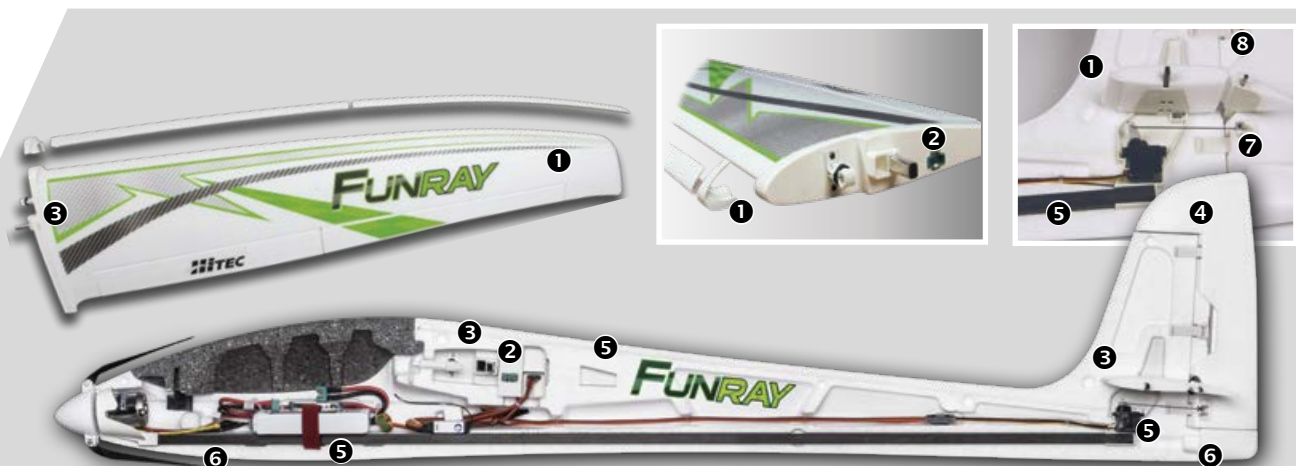
- ❶ Extremely robust wings and sturdy tailplane thanks to plastic leading edges and aluminium leading edges and aluminium-carbon fibre composite spars
- ❷ Forced connection of the servo contacts with M6 high-current plugs in the wings
- ❸ Removable wings and tailplane halves
- ❹ Removable stabiliser rudder with hollow groove hinges
- ❺ Extremely rigid fuselage with M-Space technology and continuous carbon fibre reinforcement carbon fibre reinforcement with 4-edge profile tube, GRP straps and positive and form-fit connections from the engine bulkhead to the tail boom
- ❻ Landing skids made of sturdy rockfall protection film included
- ❼ Trim compartment in the stern
- ❽ All rudder flaps reinforced with stainless steel tubes



Transparent cover optional



To the FUNRAY





LENTUS THERMIK

The most powerful ELAPOR glider model of all time!

The model is designed as a club glider with a focus on thermal and slope flying. We have once again implemented a lot of innovative ideas in the Lentus. The basic RR version of the model has a powerful ROXXY brushless motor for 3S-2600 batteries and is equipped as standard with 6 Hitec HS-65HB servos for elevator, ailerons and flaps. By installing the optionally available retractable undercarriage, the model can be self-launched in conjunction with a 4S 2600 battery and an 8x6" propeller.

As a further option, it is possible to activate the prepared tow release despite the built-in electric motor and undercarriage!

This option offers maximum flying fun. This makes the Lentus the safest model for learning F-tows, as it can be released immediately in a critical situation and the model can be flown safely back to the launch site with the electric motor. Thanks to the modern profile design, the model achieves a very wide performance spectrum and allows a dynamic flying style. The 4-flap surfaces enable precise landings (butterfly).

Further information, accessories and spare parts for the LENTUS can be found at www.multiplex-rc.de

RC functions: Rudder, elevator, aileron, motor

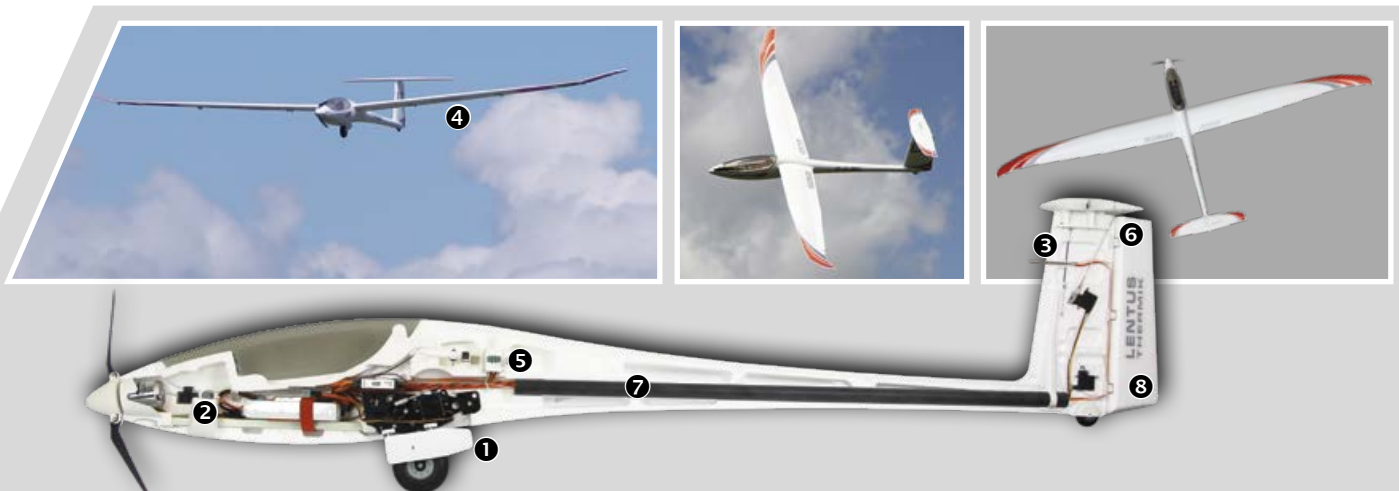
3.000 mm 1.410 mm ca.2.300 g ca.2.300 g 3S~2600 mAh

Features:

- 1 FES option (Front Electric Selflaunch) with optional retractable undercarriage, 4S drive (4S 2600) # 1-02599 and 8x6" propeller # 1-01970 - this makes the model self-launchable
- 2 Tow release prepared (can also be used with the electric version)
- 3 TEK vario installation prepared (display of airspeed and vario measurement data)
- 4 Sturdy, elaborate wings with double CFRP-ALU composite spars
- 5 Forced connection of the servo contacts with M6 high-current plugs in the wings
- 6 Detachable rudder with hollow groove hinges
- 7 Extremely rigid fuselage in M-Space technology with Ø20mm profile tube
- 8 Rudder flaps with stainless steel tubes reinforced
- 9 Landing skid made from stable rockfall protection film



To the LENTUS



FUNWING

Abbildung zeigt Modell in der KITplus-Version

Bold on the slope and on the flat!

The FunWing is the ideal companion for having great fun even on small slopes. But the FunWing also puts a smile on your face in the mountains, on dunes and on flat terrain.

The flying characteristics are always good-natured and even advanced beginners will quickly get to grips with the model. Thanks to the EPP leading edge moulding and edges, the FunWing is particularly crash-resistant, so nothing stands in the way of fox hunting on a slope. The wings are made of ELAPOR®.

Features:

- ❶ EPP leading edges and leading edges
- ❷ CFRP-reinforced ELAPOR® wings
- ❸ Magnetic motor nacelle removal in seconds
- ❹ Perfectly tuned RC setup
- ❺ Easy battery change thanks to magnetic canopy cover

Further information, accessories and spare parts for the FUNWING can be found at www.multiplex-rc.de

Kit

Kitplus

ELAPOR
FOAM



RC functions: Aileron, motor



1.245 mm



ca. 650 g



ca. 690 g



3S-950 mAh



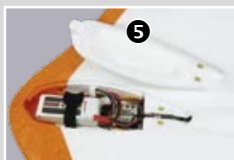
Illustrations show model in the KITplus version



To the FUNWING



Illustrations show model in the KITplus version





FUNCUB

Next Generation

The ultimate fun machine!

RC functions: Rudder, elevator, aileron, motor

1.410 mm 1.050mm ca.1.380 g 3S~2600 mAh

The name 'Cub' has a long tradition at MULTIPLEX in the field of Elapor and lightweight foam model aircraft.

It all started with the PicoCub, introduced in 2000, which was still made of polystyrene and designed as an entry-level model. This was followed by such successful models as the EasyCub, FunCub and the FUNCUB XL.

Now comes the 'Funcub NG'. NG stands for 'Next Generation' and it really is! The flying characteristics and handling have been further improved. The FunCub NG is extremely good-natured, impresses with its lightness, is nevertheless very manoeuvrable and can also be used for towing and aerobatics. It can even be used for knife-edge flight and torquing. The ROXXY motor fitted as standard offers sufficient power reserves. The FunCub NG is ideal for beginners' training and will delight young and old alike.

A new feature is that the wings are braced. The model also flies without struts, but it is advisable to fit them for aerobatics. Thanks to the large wheels and the new undercarriage, the FunCub can be taken off and landed without hesitation on almost any terrain.

The internal fuselage construction has been completely redesigned, so the motor is now mounted on the rear wall and the force absorption of the undercarriage, motor mount and battery attachment is centralised via a GRP square tube.

Further information, accessories and spare parts for the FUNCUB NG can be found at www.multiplex-rc.de

Features:

- 1 Divisible and braced wings, easy to assemble with the enclosed multitool
- 2 Sturdy undercarriage made of welded steel wires with large and lightweight EPP wheels
- 3 Optional tow release can be retrofitted
- 4 Precise direct linkage of the control surfaces
- 5 Very short take-off and landing characteristics due to offset split flaps
- 6 Easy battery change through the canopy
- 7 HiTEC servos on all control surfaces (HS-65HB on HR/SR, HS-55+ on QR)
- 8 Powerful ROXXY drive for vertical climbs



To the FUNCUB




TwinStar ND







RC functions: Rudder, elevator, aileron, motor






1.420 mm 1.085 mm ca.1.350 g 3S~3200 mAh

The TwinStar ND will inspire you!

We have given our popular TwinStar a complete visual overhaul and a new coat of paint.

The elegant design by Aircraftstudiodesign® emphasises the timeless lines of this beautiful model.

Enjoy the power and sound of two powerful engines during low flypasts. A fascinating experience!

With its extremely good-natured flight characteristics, it gives beginners a quick sense of achievement. The highly manoeuvrable TwinStar ND is a convincing aerobatic trainer: Rolls, loops, stunts and precise target landings. Thanks to its favourable design, the TwinStar ND is ideal as a camera carrier and FPV model. The model with its wingspan of 1,420 mm is ideal for transport thanks to its quickly separable wings.

This means it fits in any car boot.

The model, which is manufactured in Germany, is typically MULTIPLEX, made of ELAPOR® - a special foam material in premium quality. With the 3-S drive in the RR version, the TwinStar ND climbs steeply and is steered safely into its path thanks to the standard MULTIPLEX servos.

Features:

- 1 Separable wings, easy to assemble
- 2 Two powerful BL motors
- 3 Optional float set
- 4 Extremely good-natured flight characteristics

Further information, accessories and spare parts for the TwinStar NG can be found at www.multiplex-rc.de



To the TwinStar



PARTENAVIA
P.68

Chic, twin-engine high-wing aircraft with a special charm.

The P.68C from Vulcanair Aircraft is a twin-engine high-wing aircraft with six seats and tripod landing gear. As well as being used as a touring and transport aircraft, it is also used for pilot training. Thanks to its two engines, the P.68C is a good-natured, stable aircraft in all flying conditions, whose excellent flight characteristics are highly appreciated by many pilots.

The Partenavia P.68 from Multiplex with a wingspan of 1400mm is a model-like replica for advanced model pilots. Thanks to the two counter-rotating, brushless ROXXY BL Outrunner C28-28-1400kV motors, in conjunction with the two MUL-Ticont BL-20 P68 controllers and a 3S-2600mAh battery, the model is optimally motorised and has no tendency to yaw when changing speed. The model flies extremely well behaved and also allows aerobatic manoeuvres such as rolls, loops and inverted flight.

The CNC-manufactured and sprung nose wheel leg ensures that the model does not bounce when landing. The factory-fitted LED landing and navigation lights, as well as the functioning landing flaps, are also features that give the model a special charm.

The spacious battery compartment accepts 3S batteries with 2200 - 5000 mAh, giving you a wide range of flight performance and duration. The crystal-clear windscreen allows the installation of an FPV system to further increase the flying fun. With its bright red paintwork, the model is easy to recognise in the air.

RR

ELAPOR
FOAM

2

RC functions: Rudder, elevator, aileron, motor



1.400 mm 1.066 mm ca.1.550 g 3S-2600 mAh

Further information, accessories and spare parts for the PARTENAVIA can be found at www.multiplex-rc.de

Features:

- 1 Powerful brushless drive system with counter-rotating twin-blade propellers
- 2 Factory-installed LED landing / navigation lights, functional landing flaps
- 3 Very good handling when taxiing on the ground thanks to tripod landing gear with steerable, spring-mounted and CNC-milled nose wheel strut
- 4 Quick battery change due to front, upper fuselage cover
- 5 Large battery compartment that can hold 3S batteries with 2200 - 5000mAh
- 6 Crystal clear windscreen, suitable for for FPV
- 7 Ready-applied bright red paint paint finish, ready applied decor



To the Partenavia



TOMMY jr.



The sporty double-decker!

The MULTIPLEX TOMMY jr. is a sporty biplane modelled on the American home-built aircraft of the Meyer Aircraft Company. During development, emphasis was placed on realising an uncomplicated model with fantastic flight characteristics and a high degree of prefabrication. The TOMMY jr. is the ideal after-work and 'always with you' model. It has absolutely uncritical flight characteristics in a very wide speed range. It always remains safe and precise to control.

It is also absolutely suitable for aerobatics. It will be a lot of fun for the advanced beginner, the 'young savage' or the old hand. In most cases, the model fits in the car when assembled and is therefore always quickly ready for a flight in between. In the event that the TOMMY jr. does need to be dismantled, the undercarriage can be quickly unclipped. The wing unit, consisting of the upper and lower wing with canopy, can then be removed from the fuselage after loosening 2 plastic screws.

Further information, accessories and spare parts for the Tommy jr. can be found at www.multiplex-rc.de

RR ELAPOR FOAM 2

RC functions: Rudder, elevator, aileron, motor

900 mm 930 mm ca.1.180 g 3S~2600 mAh

Features:

- 1 Great flight behaviour of the prototype-like biplane
- 2 Very neutral, uncritical flight behaviour.
- 3 Ready painted and decorated.
- 4 Easy to transport thanks to removable undercarriage and removable wing unit
- 5 Convenient battery change through the fuselage cover.
- 6 High-performance BL motor, controller.
- 7 4 Hitec HS-65HB servos for elevator, stabilisers and ailerons are already installed.
- 8 Very high degree of prefabrication: glue and assemble the wing unit and assemble, glue in the tailplane, clip in the undercarriage undercarriage, clip in the receiver and fly!



To the TOMMY jr.





LEARJET

The legendary business jet as an ELAPOR® model.

The MULTIPLEX Learjet is a visually very appealing and easy-to-fly fan model in the shape of the legendary business jet. The model has a very high speed range, so it flies very slowly with the landing flaps set and at full throttle you get a real jet feeling.

Ground take-off is possible from a paved or short-mown grass runway. The CNC-milled and sprung aluminium undercarriage legs are rigid and can be easily removed.

The battery can be easily changed via the large opening on the top of the fuselage.

Thanks to its compact dimensions, the jet fits into any mid-range car boot when assembled.

It has ailerons, stabilisers and elevators, landing flaps, nose wheel and engine controls.

All the tools required to assemble the model are included.

The model can be assembled within 15 minutes without gluing.

Further information, accessories and spare parts for the Learjet can be found at www.multiplex-rc.de



Features:

- ① True to original lines
- ② High speed range
- ③ Powerful fan engines with great sound
- ④ Chrome-decorated air intakes on the engine nacelles
- ⑤ Suspended main and nose landing gear
- ⑥ Easy battery change thanks to large service cover
- ⑦ Easily removable winglets and nose



To the Learjet



FUNCUB XL ND

For big tasks!

The Funcub XL ND (NEW DESIGN) is the further development of our versatile and universally popular Funcub XL (multifunctional high-wing aerobatic tow plane).

Our aim was to reduce the weight and give it a fresh new look. We realised the weight saving by redesigning the undercarriage and the new EPP wheels, thus saving approx. 200g weight is saved. This allows us to achieve an even lower flying speed and a better thrust-to-weight ratio. The tuning undercarriage can also be retrofitted to the existing Funcub XL.

This further improves its outstanding short take-off and landing characteristics. It can therefore be used on almost any terrain.

Like its predecessor, the new Funcub XL ND also has many attractive details, such as the very elegant LED covers for the optional lighting with the POWER-MULTilight - a real eye-catcher. It also has a tow release included as standard (additional HS-225 servo required for activation) and a large ejection chute for which a matching parachute jumper is also available.

Further information, accessories and spare parts for the FUNCUB XL ND can be found at www.multiplex-rc.de

Kit

RR

ELAPOR
FOAM

RC-Funkt.: RC function: R-E-A, motor, lighting, discharge chute, etc.



1.700 mm 1.200 mm ca.2.650 g 6S~3200 mAh

Features:

- ① Extremely precise and mature flight behaviour
- ② Incredibly high fun factor thanks to many additional functions
- ③ Offset landing flaps for steep descents and short take-offs
- ④ Off-road characteristics thanks to huge and lightweight EPP wheels
- ⑤ High-strength fuselage thanks to 'M-frame technology'
- ⑥ Low minimum speed
- ⑦ Suitable for towing gliders (e.g. Lentus / Alpina)
- ⑧ Split surfaces, therefore easy to transport

RR Version
HITEC
SERVOS INSIDE



To the FUNCUB XL ND





Fly like a PRO.

The MULTIPLEX ParkMaster PRO is the true master for the toughest flight manoeuvres.

The use of square carbon fibre spars results in unbeatably high rigidity in the fuselage, wings and tailplane. The undercarriage is now also reinforced with carbon fibre. A newly designed and reinforced engine mount is suitable for even more powerful engines and is an absolute eye-catcher with the optional carbon engine bulkhead.

You can really get to grips with the ParkMaster PRO in the tightest of spaces. Even in moderate winds, tumblings, torquer rolls or angular loops can be flown without any problems.

The ParkMaster PRO is available as a kit and in the Kit plus version. The kit plus includes drive components that are perfectly matched to the model, such as HIMAX C 2816-1220 motor, MULTIcont BL-30 S-BEC speed controller, 10 'x4.7' propeller with driver and 4 Nano-Karbonite servos.

Kit

Kit plus

ELAPOR
FOAM



RC functions: Rudder, elevator, aileron, motor



975 mm

1.030 mm

ca. 520 g

3S~950 mAh

Features:

- ❶ Carbon spars for maximum rigidity in extreme flight manoeuvres
- ❷ New, reinforced motor mount bracket
- ❸ Highly stable carbon fibre landing gear
- ❹ Good-natured and fully 3D-capable at the same time
- ❺ Low minimum speed
- ❻ Prefabricated moulded parts made from ELAPOR®

Further information, accessories and spare parts for the ParkMaster PRO can be found at www.multiplex-rc.de



To the ParkMaster PRO





Illustrations show models with optional decal sheet!

AcroMaster PRO

The training machine for aerobatic pilots.

The AcroMaster PRO is the logical further development of our very popular Acromaster. During development, it was important to us to improve the model, but not to change it fundamentally. The appearance of the AcroMaster PRO is therefore familiar at first glance, but still completely new and fresh.

With many improvements, the AcroMaster PRO is better than ever before - and offers the ideal basis for relaxed flying and training aerobatic manoeuvres thanks to its good-natured flight characteristics and its versatility in aerobatics. Like its predecessor, the AcroMaster PRO is designed as an all-rounder. This means that you can fly both precise and classic aerobatics, as well as 3D flying with it. The AcroMaster PRO is fully throttle-proof, even XA figures (Xtreme Aerobatic figures) with a run-up are no problem.

The AcroMaster PRO is simply perfect for learning aerobatics and as a training machine for ambitious aerobatic pilots!

Further information, accessories and spare parts for the AcroMaster PRO can be found at www.multiplex-rc.de

RR

ELAPOR
FOAM

RC functions: Rudder, elevator, aileron, motor



1.100 mm

1.150 mm

ca.1.300 g

ca.1.350 g

3S~2600 mAh

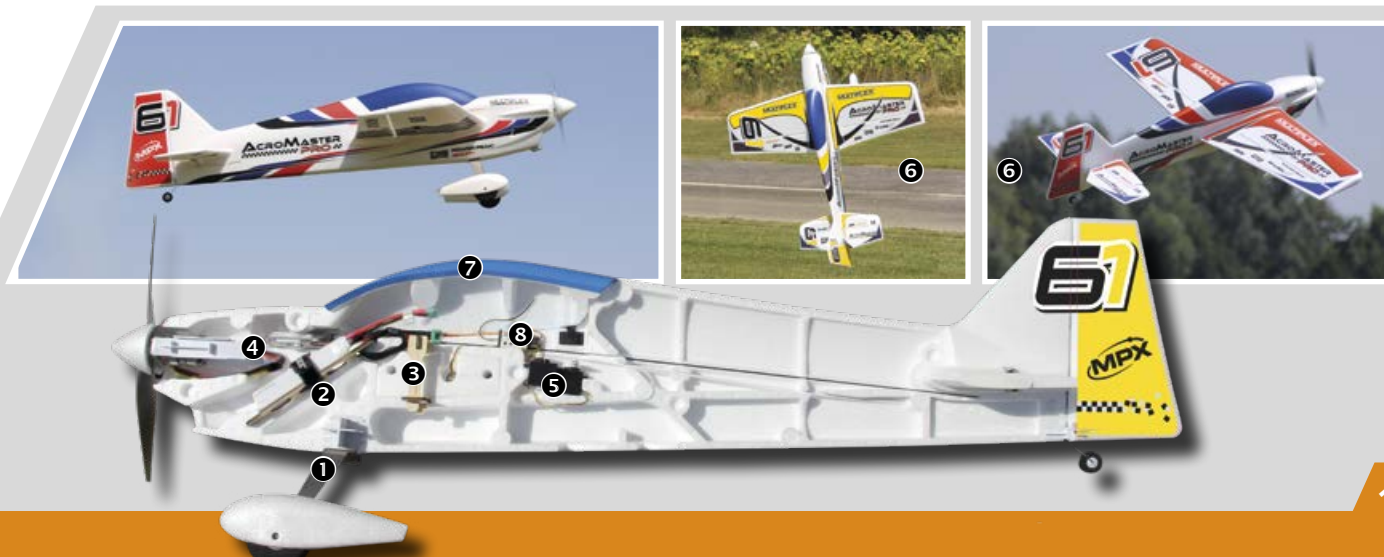
Features:

- 1 Chassis made from anodised aluminium
- 2 Battery attachment with Velcro straps
- 3 Sturdy wing locking mechanism
- 4 Very powerful and efficient ROXXY motor and controller
- 5 Hitec HS-82MG servos and Hitec HS-65HB servos installed
- 6 Chic decal sheet available in two colour variants (not included with the RR model)
- 7 Canopy completely painted
- 8 Wingstabi Wing integrated in the fuselage

RR Version
HITEC
SERVOS INSIDE



To the AcroMaster PRO





EXTRA 300S

Unlimited aerobatic fun.

The original Extra 300 S is a single-seater aerobatic aircraft with a wingspan of 7.5 metres and is powered by a Lycoming six-cylinder boxer engine with 300 hp. It is a very popular aircraft at aerobatic competitions, shows and air races. The ELAPOR® model with its handy size not only looks great, but also impresses with its outstanding aerobatic performance.

Its lines are very true to the original and it features numerous details such as rivets, dummy exhausts, a detailed cockpit and a true-to-original paint finish. The Extra 300 S is primarily designed for classic programme aerobatics, but can also be flown in 3D. You will have real fun with torn and bumped figures as well as knife-edge flights and rollovers. The 4S drive provides enormous power for powerful vertical climbs.

Further information, accessories and spare parts for the Extra 300S can be found at www.multiplex-rc.de

RR ELAPOR FOAM 3

RC functions: Rudder, elevator, aileron, motor

1.200 mm 1.086 mm ca. 1450 g 4S~2600 mAh

7min

Features:

- ① Super aerobatic characteristics
- ② Scale look thanks to original paintwork, transparent canopy and numerous details numerous details
- ③ All control surfaces mounted in fillets
- ④ Removable wings and tail surfaces
- ⑤ Flight time approx. 7min (4S ~2600Ah)



To the Extra 300S





EXTRA 330LX

The 3D freestyle monster.

The Extra 330LX is the most uncompromising aerobatic model made of foam and is in no way inferior to its wooden brothers.

We have not skimped on either the construction or the components. For example, the wings have stable and wound, lightweight carbon tube spars and the fuselage has a laser-cut and weight-optimised M-frame.

This makes the model incredibly strong and predestined for hard 3D and the XA flying style. As the Extra can be controlled extremely precisely and flies very neutrally (no mixers are required), all classic aerobatic manoeuvres can also be flown precisely and effortlessly. The Extra engages precisely in snaps or rolls and oscillates extremely little in the Harrier. This makes it easy to learn new manoeuvres or to internalise the control sequences.

The Extra 330LX is the first foam model in which we have installed the high-quality servos of the Hitec D series.

These are characterised by high precision (32-bit resolution), high actuating force (4kg x cm) and the proven soft start. The drive has been redesigned and a special high-efficiency propeller has been developed specifically for the Extra. As you can see, only the highest quality RC components are used in the Extra 330LX. This guarantees you the best flight performance and puts a smile on your face every time you take off.



RR



RC functions: Rudder, elevator, aileron, motor



1.260 mm 1.200 mm ca.1.450 g 3S~2600 mAh

Further information, accessories and spare parts for the EXTRA 330LX can be found at www.multiplex-rc.de

Features:

- ① Aerobatic flight characteristics for 3D and XA flight style
- ② M-Frame
- ③ HiTEC digital servos inside
- ④ Carbon spars



To the EXTRA 330LX



RACEWULF

He just wants to play!

The MULTIPLEX-RaceWulf is an agile racing aircraft modelled on the Focke Wulf FW 190. During development, particular attention was paid to realising an uncomplicated model with fantastic flight characteristics, a high degree of prefabrication and great looks.

The RaceWulf is the ideal model for dogfights, relay flights with colleagues or simply for flying around after work.

It is therefore exactly the right playmate for our FunRacer. It has an enormous speed range and always remains safe and precise to control.

Further information, accessories and spare parts for the RACEWULF can be found at www.multiplex-rc.de

RR

ELAPOR
FOAM

RC functions: Rudder, elevator, aileron, motor



950 mm

865 mm

ca. 1090 g

3S~2600 mAh

Features:

- 1 Spectacular speed and manoeuvrability
- 2 Ready painted and decorated
- 3 Easy to transport thanks to removable wing
- 4 Convenient battery change through the canopy
- 5 High-performance brushless motor and ESC
- 6 Metal gear servos for elevator, rudder and ailerons already installed
- 7 Very high degree of prefabrication: mount the tailplane, install receiver, fly
- 8 Perfect cooling of motor and battery thanks to large air inlet with fan blades



To the RACEWULF





FunJet 2

Jet feeling at an affordable price!

Making the good even better is always a challenge. In its day, the FunJet was already the best-flying ELAPOR pressurised propeller jet on the market. With the FunJet 2, there is now a further optimised version with state-of-the-art technology. A highly efficient ROXXY 3S engine, the new canopy shape and the new, high-quality design make the model even more attractive.

The speed with the components recommended by us is approx. 160 km/h.

The enormous speed and the outstanding low-speed flight and landing characteristics are what make this model so special, as it can always be controlled uncritically and precisely.

The big difference to its faster brother, the FunJet 2, is the lower weight and the associated very uncritical hand launch characteristics. This makes the FunJet 2 the ideal jet when perfect all-round characteristics and easy handling are required.

The sound of the model conveys a real feeling of speed at an affordable price. Due to its size, the FunJet 2 fits in any car boot and should always be taken along so that the daily fun is not neglected :-)

With the optional use of the vector control unit and a wing stabiliser (either with integrated receiver or as a pure gyro), the FunJet 2 can be used to fly extreme flight manoeuvres such as flatspin, knife-edge flights etc. It can even be used for hovering and torquing.

Even hovering and torquing is possible!

The Wingstabi setups for adjusting the vector unit (optional) are available as a free download file on the MULTIPLEX homepage.



RC functions: Elevator and aileron (Deltamix), motor



783 mm

750 mm

ca.600 g

3S~2600 mAh

Further information, accessories and spare parts for the FunJET 2 can be found at www.multiplex-rc.de

Features:

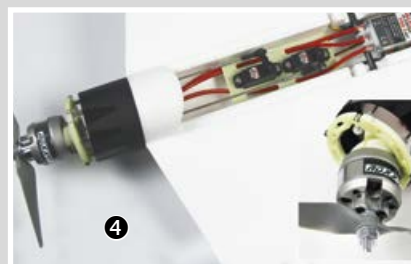
- 1 Highly efficient ROXXY 3S drive
- 2 Very uncritical hand launch characteristics
- 3 Low weight
- 4 Suitable for vector control unit



**Vmax. ca.
160 km/h**



To the FunJet 2





For speed fans only!

The FunJet ULTRA was already the fastest ELAPOR model on the market at the time. The speed of the new FUNJET ULTRA 2, with the components recommended by us (ROXXY 4S drive), is approx. 220 km/h.

The 'ULTRA version' is designed for extreme speed. It is more firmly foamed than the 'normal version', which leads to even more stability of the entire model, with a slightly increased weight. At speeds above the 200 km/h mark, the demands on pilot and material are enormous. The 'ULTRA' is therefore the right choice for 'speed fans' - the ultimate speed kick is guaranteed.

Despite being designed for maximum speed, the FunJet ULTRA2 has excellent low-speed flight and landing characteristics, as it can always be controlled uncritically and precisely.

Further information, accessories and spare parts for the FunJet 2 ULTRA can be found at www.multiplex-rc.de

Kit

Kit plus

ELAPOR
FOAM

RC functions: Elevator and aileron (Deltamix), motor



783 mm



750 mm



ca.875 g



4S~2600 mAh

Features:

- ① Highly efficient ROXXY 4S drive
- ② Foamed firmer than the 'normal version'
- ③ Extremely stable
- ④ Outstanding slow flight characteristics
- ⑤ Good hand launch characteristics

**Vmax. ca.
220 km/h**



To the FunJet ultra



④



⑤



③



FUNNYCUB

Next Generation

Not just for bush plane pilots!

The MULTIPLEX FunnyCub brings a bush flying atmosphere to the sports halls and gardens of model flying enthusiasts. Thanks to its large wheels and lightly sprung undercarriage, it can take off and land almost anywhere, just like its big role model, the FunCub.

Optionally, the two ailerons can be lowered as landing flaps, which further reduces the flying speed and take-off distance. The FunnyCub is therefore a 'must have' for all bush flyers and indoor fans, as well as those who simply want to take a relaxing spin behind the house.

The EPP model is very robust and forgives almost every mistake. Almost all imaginable aerobatic manoeuvres are possible with this model.



RC functions: Rudder, elevator, aileron, motor



930 mm

810 mm

ca. 180 g

2S~450 mAh

Weitere Infos und Zubehör zur FunnyCub
finden Sie unter www.multiplex-rc.de



To the FunnyCub





Challenger

An aerobatic biplane to fall in love with!

The MULTIPLEX Challenger is the perfect introduction to the world of 3D aerobatics.

The two large wings and the high fuselage allow a low flying speed in all flight attitudes. The large control surfaces provide the necessary manoeuvrability. This makes it equally suitable for beginners and professionals. equally well suited. A 'must have' for all biplane and 3D aerobatics fans.

The EPP model is very robust and forgives almost every mistake. All imaginable aerobatic manoeuvres are possible with this model.

RC functions: Rudder, elevator, aileron, motor

850 mm
 890 mm
 ca.225 g
 3S~350 mAh

Further information and accessories for the Challenger can be found at www.multiplex-rc.de



To the Challenger





SLICK X360

The perfect introduction to the 3D aerobatics scene!

The Slick X360 has set new standards in the aerobatics scene in recent seasons. It has successfully demonstrated this in numerous competitions. Developed and tested by renowned competition pilots, MULTIPLEX has created a model whose flight characteristics are absolutely convincing. The Slick is very robust and forgives almost any mistake.

The MULTIPLEX Slick X360 is the perfect introduction to the world of 3D aerobatics for indoor and outdoor use.

RC functions: Rudder, elevator, aileron, motor

860 mm 918 mm ca. 195 g 2S~450 mAh

Further information and accessories for the Slick X360 can be found at www.multiplex-rc.de



To the Slick X360





SLICK X^{4D}₃₆₀

The variant for 4D performance!

The MULTIPLEX Slick X360 4D is the perfect introduction to the world of 4D aerobatics.

The Slick X360 4D has set new standards in the aerobatics scene in recent seasons. It has successfully demonstrated this at numerous competitions. Developed and tested by renowned competition pilots, Multiplex has created a model that is absolutely convincing with its flight characteristics.

The enlarged control surface flaps compared to the standard version and the 2 mm thinner EPP result in a fully 4D-capable model that delivers a strong performance even without thrust reversal.

RC functions: Rudder, elevator, aileron, motor

860 mm 918 mm ca.185 g 3S~350 mAh

Further information and accessories for the Slick X360 4D can be found at www.multiplex-rc.de



To the Slick X360 4D



J-10

The beginning of indoor 3D jet flying!

The J-10 and Eurofighter jets mark the beginning of a new era of indoor 3D jet flying. Both models are precise and extremely manoeuvrable in the smallest of spaces. Thanks to their low weight and the resulting uncomplicated handling, they impress beginners and professionals alike. However, the jets are not only fun indoors, they are also a great companion outdoors on windless days.

Our J-10 is modelled on the Chinese multi-purpose fighter aircraft. The blue, white and red livery makes it an eye-catcher at any air show.

Further information and accessories for the J-10 can be found at www.multiplex-rc.de

Kit  INDOOR PRIME TIME

RC functions: Rudder, elevator, aileron, motor

 640 mm  960 mm  ca. 180 g  3S~350 mAh



To the J-10





Eurofighter

Chic indoor jet modelled on the original!

A Eurofighter in a special outfit: Our Eurofighter was modelled on the Bundeswehr's 'Carbon Warrior'.

The J-10 and Eurofighter jets mark the beginning of a new era of indoor 3D jet flying. Both models can be flown precisely and at the same time extremely manoeuvrable in the smallest of spaces. Thanks to their low weight and the resulting uncomplicated handling, they impress beginners and professionals alike. However, the jets are not only fun indoors, they are also a great companion outdoors on windless days.

Further information and accessories for the Eurofighter can be found at www.multiplex-rc.de

Kit  **2**  **INDOOR PRIME TIME**

RC functions: Rudder, elevator, aileron, motor

700 mm 860 mm ca. 175 g 3S~350 mAh



To the EUROFIGHTER



GP14 VELO CARBOTEC

Pure elegance and performance!

The MULTIPLEX GP-14 Velo Carbotec is modelled on the modern high-performance glider from the company GP Gliders. The scale is 1:3.2, which results in a wingspan of 4.2 metres for our GP-14 Velo Carbotec compared to the original.

The model design and CAD construction were realised in cooperation with Ceflix-Modellsport. Anyone familiar with Ceflix's premium models will know why we were delighted with this co-operation. The prototypes were put through their paces on the flat and in high alpine terrain. We must honestly admit that we are delighted with the performance of our new GP-14 Velo Carbotec.

It is strong in thermals, has a super pull-through, is very agile and always remains good-natured in slow flight. The elegant flight appearance suggests a significantly larger model, which is due to the voluminous fuselage that corresponds to the scale.

Further information, accessories and spare parts for the GP14 VELO CARBOTEC and the GP-14 VELO Carbotec double carbon+ can be found at www.multiplex-rc.de



Kit

VOLL GFK-CFK



RC-Funkt.: S-, H-Querruder, Motor, ggf. Sonderfunktionen



4.230 mm 2.020 mm ca. 5.800 g ca. 6500 g 5S-5000 mAh

Features:

- ① 4-edge CFRP connector
- ② Ready-made wing attachment to the fuselage using M5 plastic knurled screws
- ③ Plug-in winglets
- ④ Full CFK stabilisers
- ⑤ Different coloured decals available
- ⑥ CNC machined canopy glass for easier assembly
- ⑦ Double carbon+ version available



To the GP14 VELO





Model airplanes 2024



Never miss the TOP NEWS again!

**Click here to subscribe to
the NEWSLETTER.**



www.multiplex-rc.de

accessories

**From A to Z we offer a
wide and selected
portfolio of accessories
you may need.
Check it out !**



MULTIPLEX products are available from specialised dealers or directly in the MULTIPLEX online shop!

MULTIPLEX EXCLUSIV products are only available in our online shop!

MULTIPLEX Modellsport GmbH & Co.KG • Westliche Gewerbestr. 1 • D-75015 Bretten • Germany • www.multiplex-rc.de